

Rotterdam University of Applied Sciences - RUAS

DEQAR @RUAS: Knowledge and Recognition Tool in the Partner Screening Workflow



Thomas Blanc de la Carrere
Quality Advisor Internationalisation



Presentation Outline

- Introduction RUAS
- Our “Why” of internationalisation
- Meaningful Partnerships
- Partner Screening Workflow
- DEQAR as Knowledge and Recognition Tool
- Examples
- Questions



Rotterdam University of Applied Sciences - RUAS

- Public
- Applied Sciences
- 10 locations in Rotterdam
- 40 000 students
- 13 institutes and research centers
- 45 programmes taught in English
- About 400 partnerships





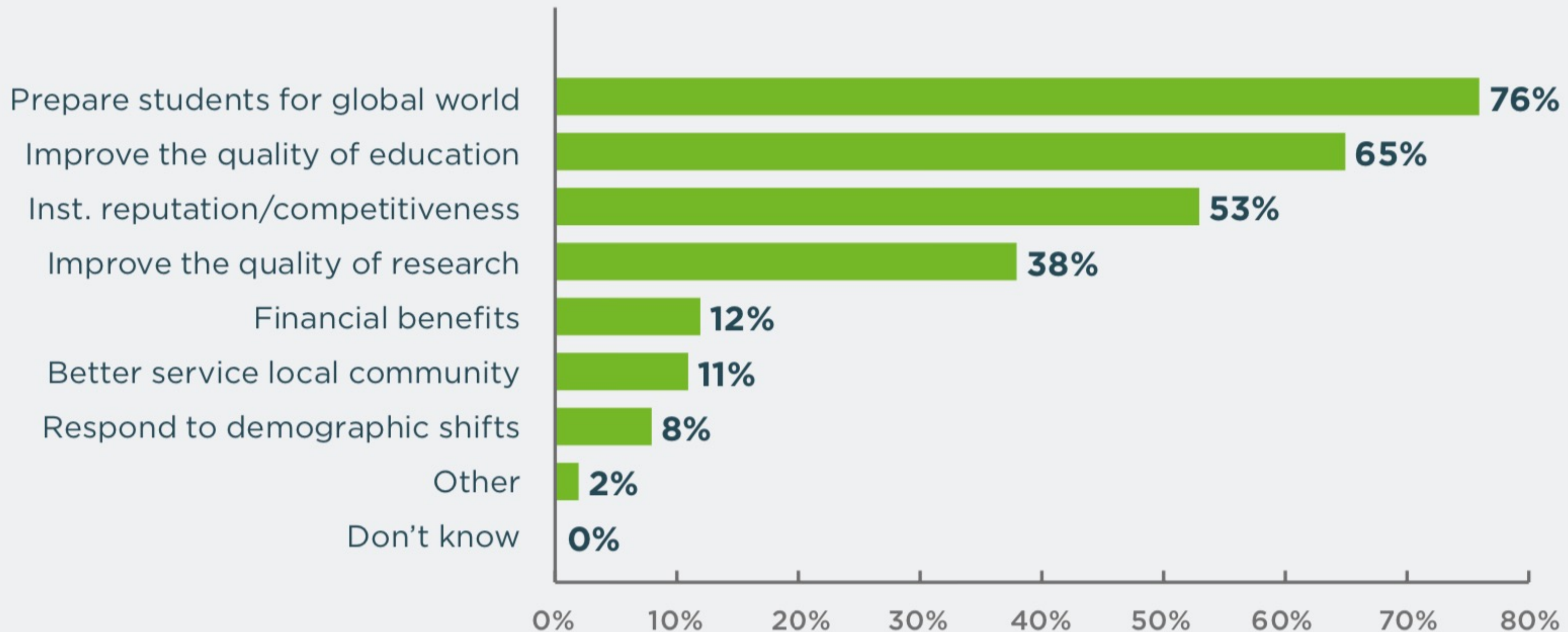
Why do we cooperate?

What makes a partner valuable?



Why do we internationalise in the first place?

Main goals of internationalisation* (n=2317)



Our Purpose defines our Internationalisation

Challenge



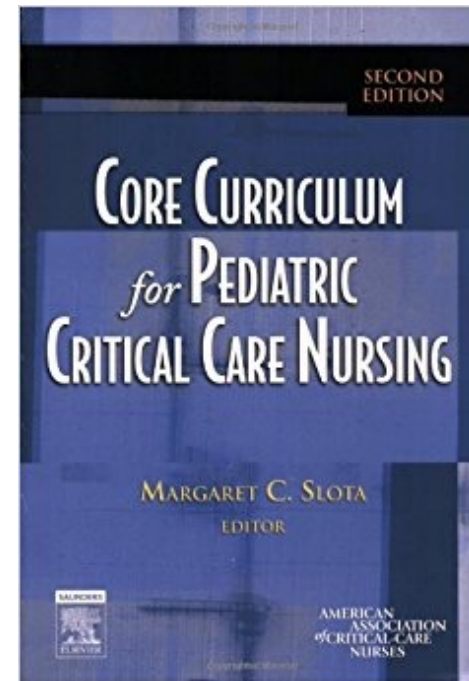
Need

Knowledge &
Skills



Implementation

Learning Outcomes



Program Organization

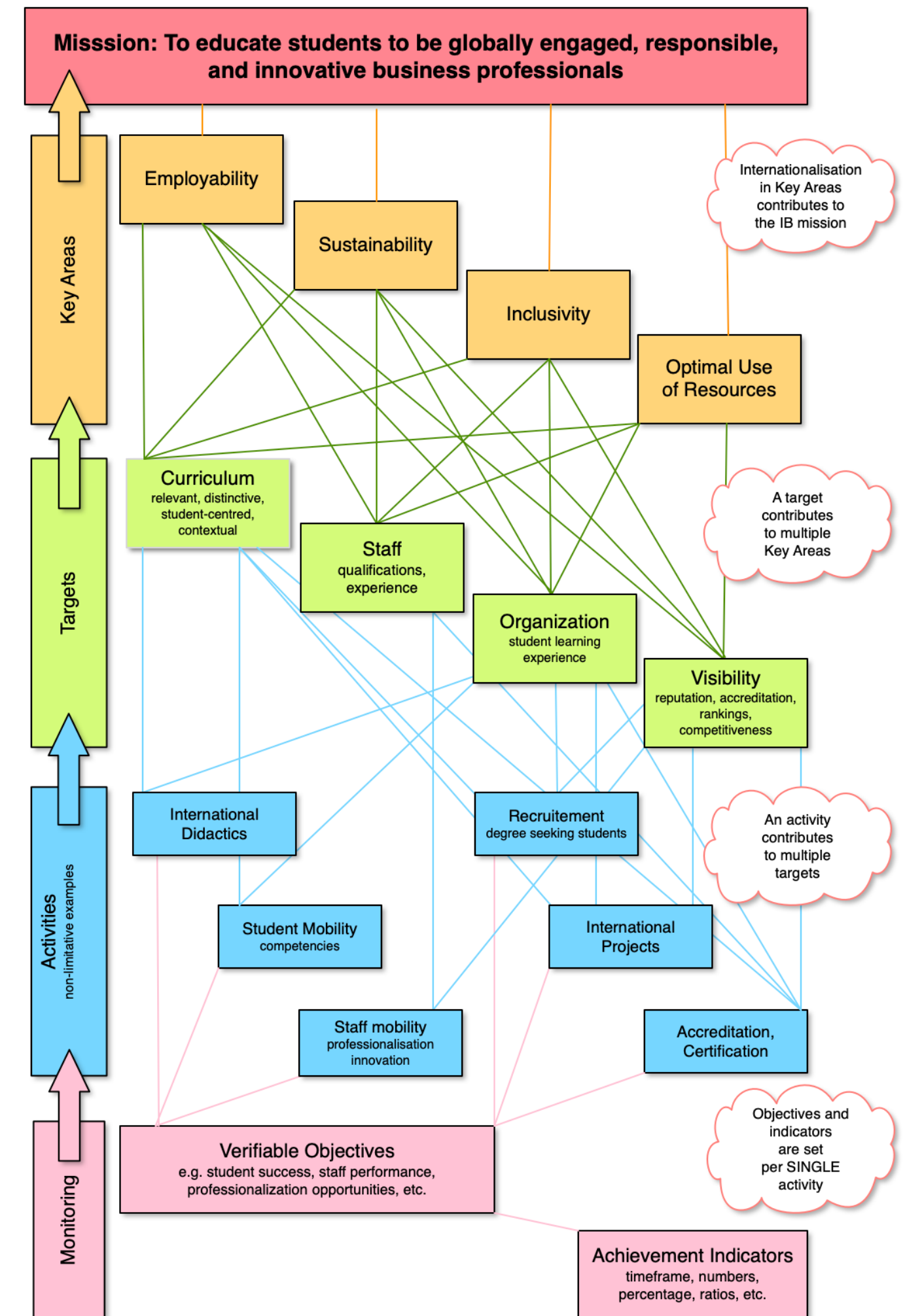
Staff, Support, Facilities,
Placement



Solution

Reflective Practitioner



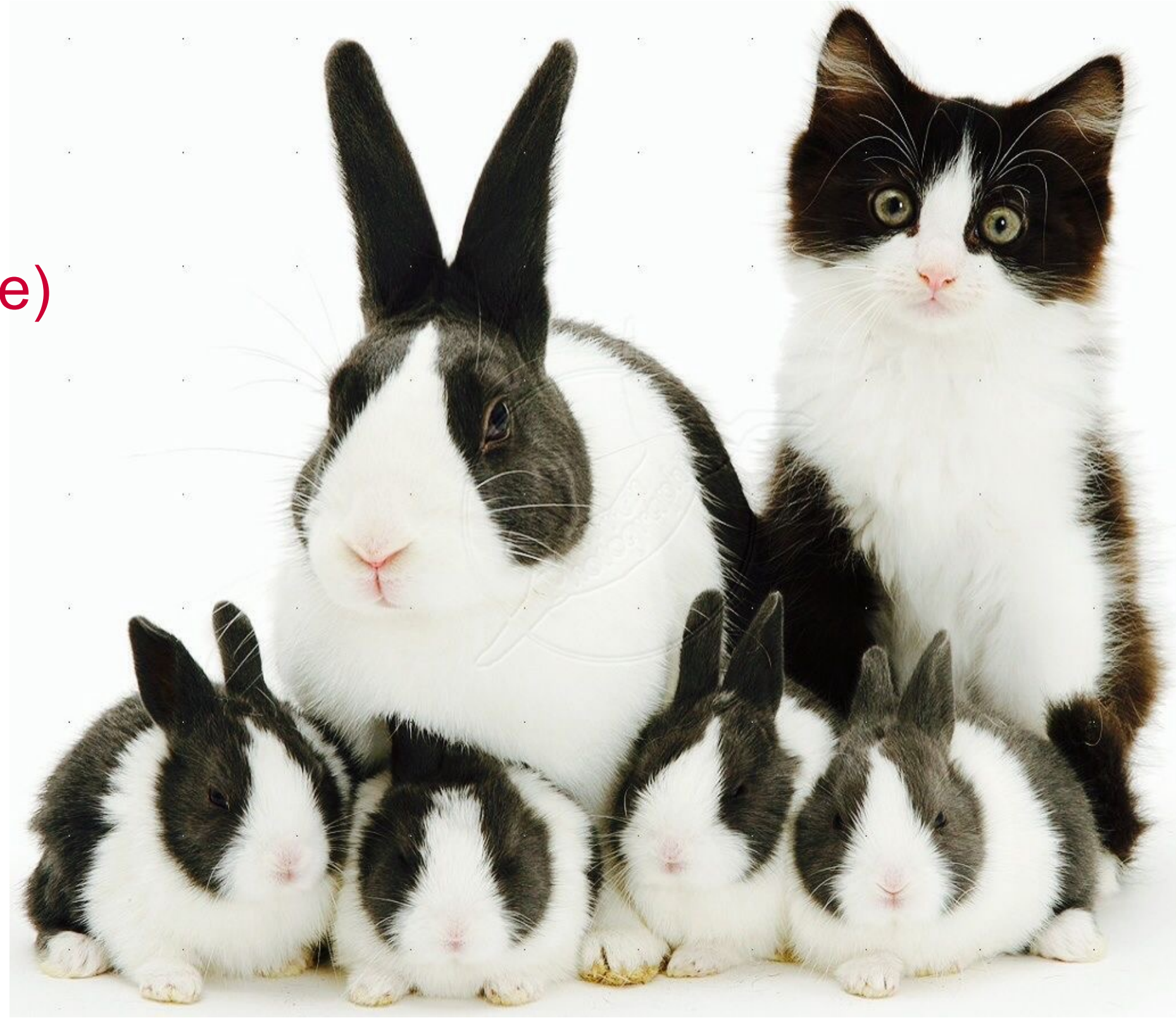


Partner Screening at programme level

as Pathway to Meaningful Partnerships

Screening Workflow

1. Quick Scan (DEQAR comes in here)
2. Partnership Rationale
3. Mobility Checklist
4. Partnership Feasibility
5. Partnership audit



Quick Scan

risk assessment at central level - features

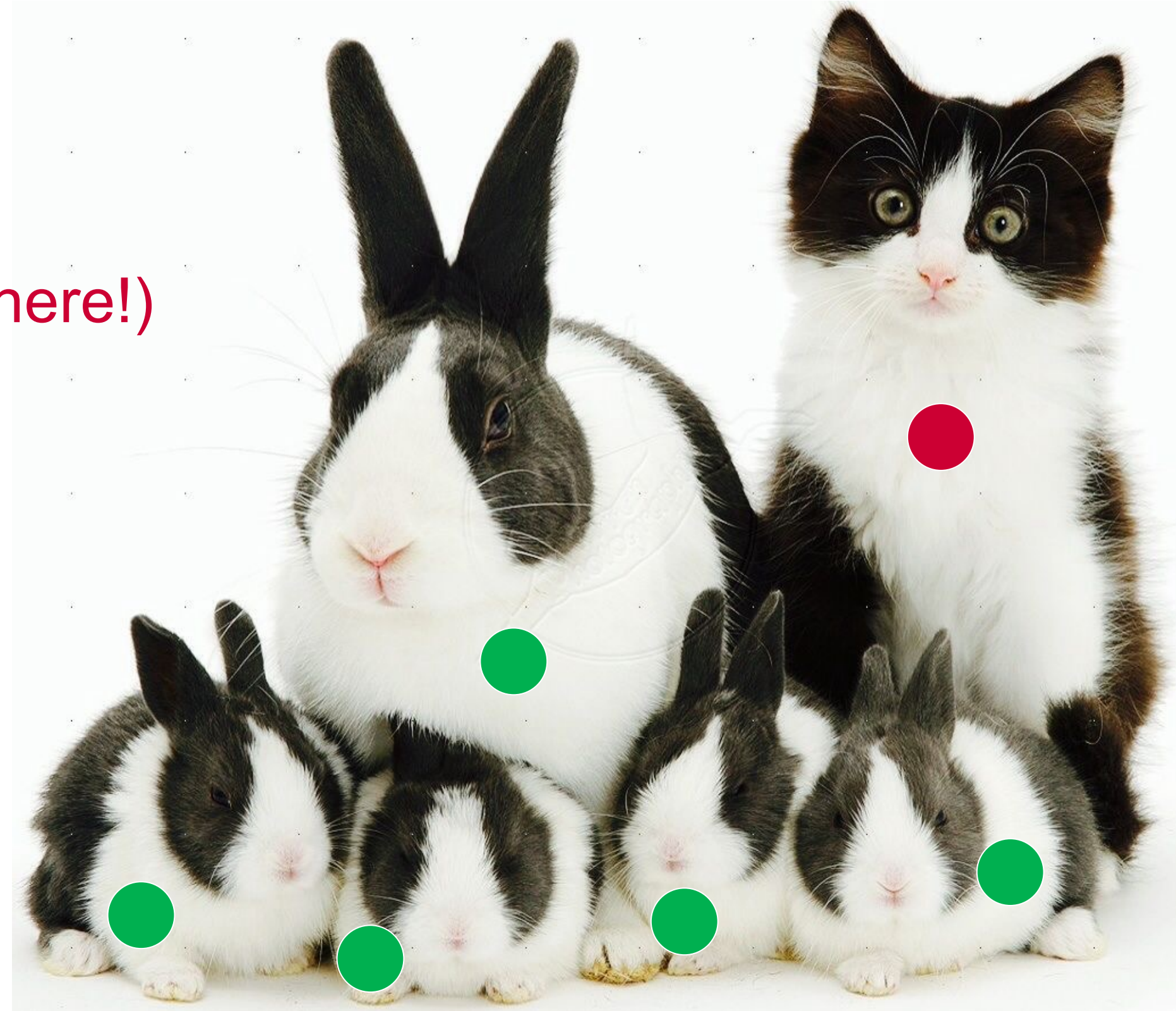
- Central level
- Not specific to study fields
- Combination of criteria
- Authoritative sources
- Three-point scale ● ● ●
- Intranet database
- Updated periodically



Quick Scan

risk assessment at central level - indicators

1. Background & Statistics
2. Rankings
3. Accreditation (DEQAR comes in here!)
4. Quality of Partner Network
5. Reputable Int'l Networks
6. Offer in English
7. Negative publicity
8. Country Safety



Quick Scan

Example: <https://confluence.hr.nl/x/r4Y4Bg>

Confluence

Spaces

People

Calendars

Create

...

Search

?

Partner Universities: Quality Screening

SPACE SHORTCUTS

Request a Quick Scan

PAGE TREE

WELCOME

STEP-BY-STEP

GET-IN-TOUCH

Australia

Austria

Belgium

Brazil

Bulgaria

Canada

Chile

China

Costa Rica

Croatia

Czech Republic

Denmark

Egypt

Estonia

Finland

France

Germany

Greece

Hungary

India

Indonesia

Ireland

Italy

Japan

Latvia

Lithuania

Malaysia

Malta

Space tools

Pages / WELCOME

WELCOME

Created by Blanc de la Carrere, T.F.A. (Thomas), last modified on Nov 18, 2021 827 views since 16 Nov 2020

RUAS Partner Portal

Quality of international partnerships at your fingertips

Newcomers' Tips

A simple check on a partner to know your risks ? - We've got you covered !

Browse the partner pages on the left to flip through the Quick Scans, or... Request a Quick Scan

Will this partner suit your needs ? - Only you can tell !

Choose wisely by following a step-by-step workflow...

Questions or need help ? - Let us know!

We provide guidance and support regarding the quality of partnerships. Get in touch !

Spot that Uni

simply type name, country, colour label, institute, city, etc. in the search box below.

Examples: japan, green, rbs, birmingham, erasmus...

Not found what you searched for ?

Try Advanced Search

Still nothing ?

Request a Quick Scan

Mind the Risk

Partnerships also mean taking risks! How much risk are you ready to take?

Quick Scans' colour labels make your decision easier !

Label	Meaning
	From the information available publicly at the moment of writing, no major risks for cooperation could be identified.
	Moderate risks have been identified. These have to be taken into account by your study programme / institute prior to engaging into cooperation.
	Significant and / or multiple risks have been identified. It is recommended to refrain from the partnership.

Statistics - 9 September 2021

Quick Scans

Foreign institutions	Numbers
Total partners RUAS*	410*
Total Erasmus partners	246
Total Non-Erasmus partners**	164**

Currently in the Making

... or what keeps us up at night

Priority (upon request)

INSPE Toulouse Occitanie-Pyrénées, France

Hochschule fur angewandantes Management Erding, Germany

CoIA - Malmö University, Sweden

CoIA - UNIVERSITAT AUTÒNOMA DE BARCELONA IAB (Escola Massana) Barcelona

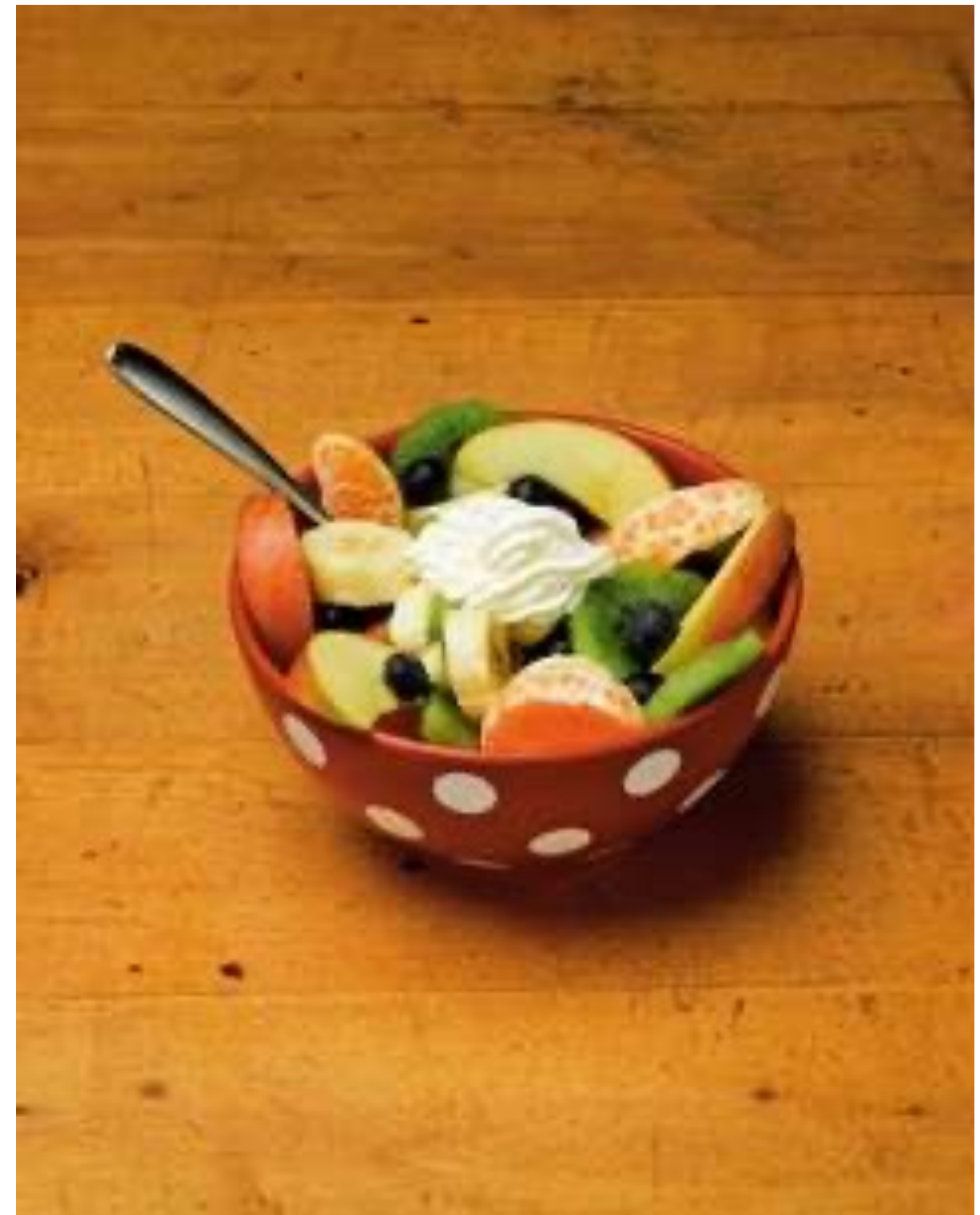
Good to Know

COVID-19

In the context of the current COVID-19 pandemic the safety level of the country as evaluated by the Dutch Ministry of Foreign Affairs may be different from the one indicated in the Quick Scans realized prior to the pandemic. This biological hazard should be added to other risks mentioned at the moment of writing of the quick scan. The safetv level has to be reevaluated by the interested RUAS institute or

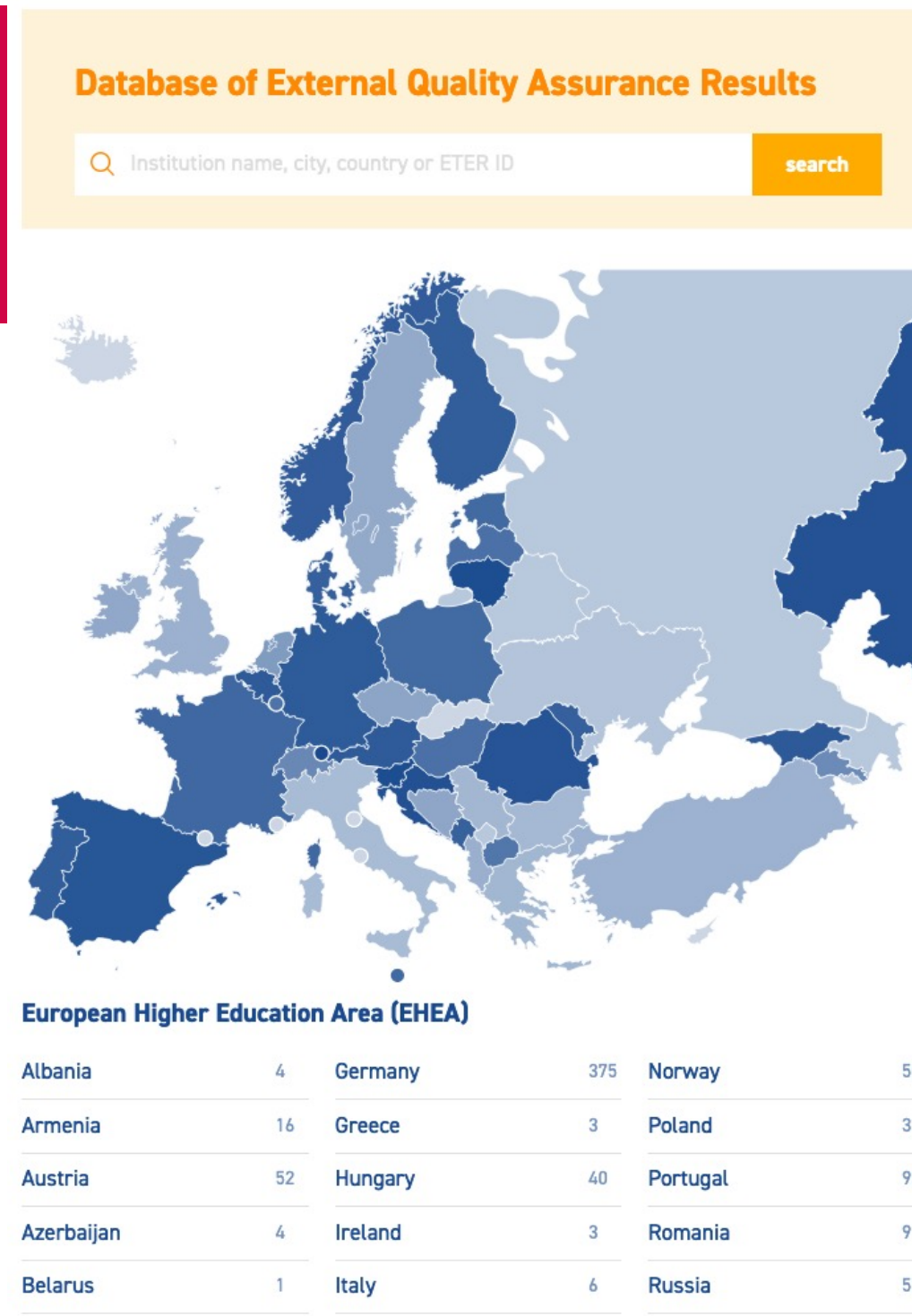
Workflow without EQAR

- Find competent QAA from authoritative source
(NA, Nuffic, ENQA, ECA, INQAHEE...)
- Sometimes language barrier
- Sometimes intricate interface
- Different national approaches to accreditation
- Multiple agencies in one country
- Sometimes no search function
- Time consuming



With **eqar** 

- Clarity
- Consistency
- comparability in the presentation of accreditation results from different sources
- one-stop shop
- English
- Programme and institutional accreditation results in one place



EVALUARI LICENTA

INFORMATICĂ INDUSTRIALĂ (REȘITA) – SP5636

UNIVERSITATEA "BABEȘ-BOLYAI" DIN CLUJ-NAPOCA

Informatica industrială (Resita)

Data validare: 30/06/2021

DESIGN – SP5633

UNIVERSITATEA "AUREL VLAICU" DIN ARAD

Design

Data validare: 30/06/2021

ECONOMIA COMERȚULUI, TURISMULUI ȘI SERVICIILOR – SP5578

UNIVERSITATEA "ARTIFEX" DIN BUCUREȘTI

Economia comerțului, turismului și serviciilor

Data validare: 30/06/2021

TERAPIE OCUPAȚIONALĂ – SP5576

UNIVERSITATEA "VASILE ALECSANDRI" DIN BACĂU

Terapie ocupațională

Data validare: 30/06/2021

PEDAGOGIA ÎNVĂȚĂMÂNTULUI PRIMAR ȘI PREȘCOLAR (ALEXANDRIA) – SP5574

UNIVERSITATEA DIN PITEȘTI

Pedagogia învățământului primar și preșcolar (Alexandria)

Data validare: 30/06/2021

AUTOMATICĂ ȘI INFORMATICĂ APLICATĂ –



UNIVERSITATE

Toate universitatile

FACULTATE

Toate facultatile

DOMENIU

Toate domeniile

SPECIALIZARE

Toate specializarile



"Gheorghe Asachi" Technical University of Iasi

Universitatea Tehnică "Gheorghe Asachi" din Iași

Basic information

Identifiers	DEQARINST2214	MIETER R00024
Location(s)	Iași, Romania	
Website	http://www.tuiasi.ro	
Founding year	1937	
QF-EHEA levels	first cycle	
Permalink	https://data.deqar.eu/institution/2214/	

National External Quality Assurance Requirements

- Programme evaluation/accreditations are valid for five years and must be renewed regularly. Programmes first need to receive a provisional authorisation that is granted by the Ministry and, two years after the graduation of the first cohort, programmes may apply for an accreditation.
- Evaluation of Master Study Domains The evaluation procedure started in 2018. The results of the evaluation are valid for five years.
- Institutional evaluations/accreditation are valid for five years. During the evaluation procedure, about 20 per cent of the study programmes offered by the institution are also evaluated. Before initiating an institutional accreditation higher education institutions need to apply for provisional authorisation.
- Further information on external quality assurance in Romania

External Quality Assurance Reports and Decisions

Institutional level

1 report

<div>🕒</div> <div>🛡️</div> <div>🏗️</div>	Institutional evaluation/accreditation	▼
--	--	---

Programme level

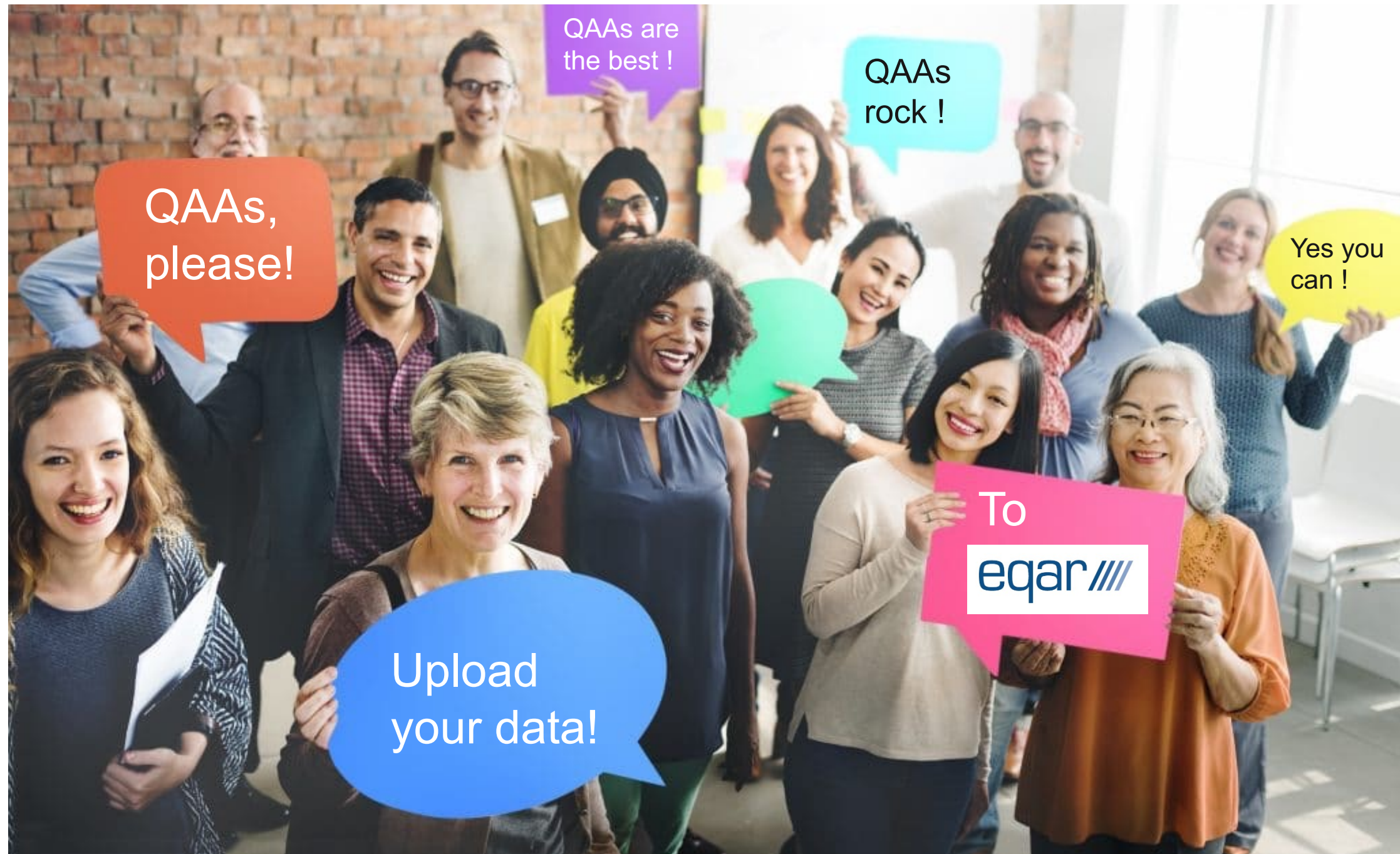
1 - 10 of 33 reports

1 2 3 4

<div>🕒</div> <div>🛡️</div> <div>🏗️</div>	Architecture, first cycle	▼
<div>🛡️</div> <div>🏗️</div>	Automation and Applied Informatics, first cycle	▼
<div>🕒</div> <div>🛡️</div> <div>🏗️</div>	Building services, first cycle	▼
<div>🛡️</div> <div>🏗️</div>	Chemical engineering, first cycle	▼
<div>🕒</div> <div>🛡️</div> <div>🏗️</div>	Chemical technology of leather products and substitutes, first cycle	▼
<div>🕒</div> <div>🛡️</div> <div>🏗️</div>	Civil Engineering (in English), first cycle	▼
<div>🕒</div> <div>🛡️</div> <div>🏗️</div>	Civil, Industrial and Agricultural Constructions, first cycle	▼
<div>🕒</div> <div>🛡️</div> <div>🏗️</div>	Computer science, first cycle	▼
<div>🕒</div> <div>🛡️</div> <div>🏗️</div>	Computer science applied in electrical engineering, first cycle	▼
<div>🛡️</div> <div>🏗️</div>	Construction of motor vehicles, first cycle	▼

In the name of HEIs - Dear QAAs!

- Your work is important for us!
- Your data is vital to our quality processes!
- Please join EQAR !
- Please do not get discouraged by technical challenges !
- Please upload your accreditation results to DEQAR !



QUESTIONS





**ROTTERDAM UNIVERSITY
OF APPLIED SCIENCES**

exceed expectations